

This Page Is Inserted by IFW Operations
and is not a part of the Official Record

BEST AVAILABLE IMAGES

Defective images within this document are accurate representations of the original documents submitted by the applicant.

Defects in the images may include (but are not limited to):

- BLACK BORDERS
- TEXT CUT OFF AT TOP, BOTTOM OR SIDES
- FADED TEXT
- ILLEGIBLE TEXT
- SKEWED/SLANTED IMAGES
- COLORED PHOTOS
- BLACK OR VERY BLACK AND WHITE DARK PHOTOS
- GRAY SCALE DOCUMENTS

IMAGES ARE BEST AVAILABLE COPY.

**As rescanning documents *will not* correct images,
please do not report the images to the
Image Problem Mailbox.**

(12) INTERNATIONAL APPLICATION PUBLISHED UNDER THE PATENT COOPERATION TREATY (PCT)

(19) World Intellectual Property Organization
International Bureau



(43) International Publication Date
14 June 2001 (14.06.2001)

PCT

(10) International Publication Number
WO 01/42322 A1

- (51) International Patent Classification⁷: C08F 210/06
Main: 1827 Orchard Country Lane, Houston, TX 77062 (US). DEKMEZIAN, Armenag, H.; 2806 Evergreen Cliff Trail, Kingwood, TX 77345 (US).
- (21) International Application Number: PCT/US00/33325
- (22) International Filing Date: 8 December 2000 (08.12.2000) (74) Agents: RUNYAN, Charles, E. et al.; ExxonMobil Chemical Company, P.O. Box 2149, Baytown, TX 77522-2149 (US).
- (25) Filing Language: English
- (26) Publication Language: English (81) Designated States (national): BR, CA, CN, JP, KR, MX, SG.
- (30) Priority Data: 09/458,918 10 December 1999 (10.12.1999) US (84) Designated States (regional): European patent (AT, BE, CH, CY, DE, DK, ES, FI, FR, GB, GR, IE, IT, LU, MC, NL, PT, SE, TR).
- (71) Applicant: EXXON CHEMICAL PATENTS INC. [US/US]; 5200 Bayway Dr., Baytown, TX 77520-5200 (US).
Published:
— With international search report.
- (72) Inventors: WENG, Weiqing; 13707 Shadow Falls Court, Houston, TX 77059 (US). MARKEL, Eric, J.; 4534 Natural Bridge Drive, Kingwood, TX 77345 (US). CHANG, —
For two-letter codes and other abbreviations, refer to the "Guidance Notes on Codes and Abbreviations" appearing at the beginning of each regular issue of the PCT Gazette.



WO 01/42322 A1

(54) Title: PROPYLENE DIENE COPOLYMERIZED POLYMERS

(57) Abstract: A method of lowering MFR response of a high melt flow rate polymer producing metallocene catalyst is provided. The method includes contacting the metallocene catalyst with a sufficient quantity of α,ω -diene monomer such that when the catalyst composition is contacted with polymerizable reactants under suitable polymerization conditions, the resulting polymer has an MFR rate in the range of 0.1 to 19. Hydrogen and ethylene may also be present in the polymerization. Additionally a catalyst composition is provided which includes a high melt flow rate polymer producing metallocene catalyst and a sufficient quantity of α,ω -diene monomers such that when the catalyst composition is contacted with a monomer under polymerization conditions, the resulting polymer has an MFR rate in the range of 0.1 to 19.

PROPYLENE DIENE COPOLYMERIZED POLYMERS**FIELD**

5 The present invention relates to methods of propylene polymerization. More particularly the invention relates to methods of copolymerizing propylene and diene monomers.

BACKGROUND

10 Polypropylene is an inexpensive thermoplastic polymer employed in a wide variety of applications, the articles of which include, for example, films, fibers, such as spunbonded and meltblown fibers, fabrics, such as nonwoven fabrics, and molded articles. The selection of polypropylene for any one particular application depends, in part, on the properties of the polypropylene polymer candidate, the fabrication mode or manufacturing process and the final article and its intended uses. Examples of some of these properties include
15 density, molecular weight, molecular weight distribution, melting temperature, and melt flow rate.

The final properties of polypropylene are generally dependent upon the polymerization conditions present during polymer formation. One such polymerization condition is the catalyst. In some instances, while the catalyst
20 selection is an important component in the polymerization reaction, changing other polymerization condition variables in the presence of the same catalyst may produce polypropylenes having different final properties. For example, the addition of hydrogen to a metallocene catalyzed polymerization reaction may increase the catalyst activity. Catalyst activity may be measured by the increase
25 or decrease in the amount of polymer produced during a measured time interval by a measured amount of catalyst. Generally, an increase in catalyst activity results in an increase in the amount of polymer produced by the catalyst over a measured time interval. Producing more polymer with the same catalyst or using
30 less catalyst to produce the same amount of polymer may provide a commercial advantage.

But there are many instances where the addition of hydrogen not only increases the amount of polymer but also increases the melt flow rate (MFR) of the polymer. Many manufacturing processes have specific, in not strict, polymer MFR parameters. Generally, high MFR (low molecular weight) polymers are not suitable for many applications. This is because melting and handling the molten polymer are common steps in converting the polymer into a finished article. As such, a polymer having a high MFR may, upon melting, become too fluid (or lack sufficient viscosity) to be processed into, for example, a foamed article, or an extruded fiber suitable for forming a nonwoven web or a thermoformed article. As such, increasing both polymer production and the polymer's melt flow rate may result in the production of greater quantities of polymer which are unsuitable for many manufacturing processes.

In other instances, it may be desirable that the finished polypropylene article possess a certain level of clarity. In some of these instances, clarity may be achieved by the addition of ethylene to the propylene polymerization process. The incorporation of ethylene into the polypropylene chain tends to break up or otherwise alter the polypropylene crystalline structure. The incorporation of ethylene in some instances may also reduce the molecular weight of the polymer and increase the melt flow rate. Again, because many manufacturing processes have strict melt flow rate parameters, increasing the polymer MFR may not be desirable.

Additionally, certain catalysts, and particularly certain metallocene catalysts are suitable for producing polypropylene having a MFR of from greater than 19-2,000. Generally, a catalyst and particularly a metallocene catalyst, capable of producing polypropylene and particularly homo-polypropylene having a MFR greater than 19 may be referred to as a high MFR polymer producing catalyst. Polypropylene polymers having a MFR in this range may be useful in some applications, such as fiber spinning, melt blowing, injection molding and hot melt adhesives. If, however, polypropylene having a melt flow rate below

this range is desirable, the polymer producer may be required to use a different catalyst. Switching catalyst is expensive and time consuming.

Therefore, while it is desirable to improve polymer production and polymer properties such as clarity, there exists a need to achieve these objectives while complying with processing melt flow rate parameters. Additionally, there exist a need to expand the melt flow rate capability of high melt flow rate polymer producing catalyst to avoid the associated cost and time inherent in switching catalysts.

SUMMARY

The present invention includes a copolymerization reaction of olefin monomers, desirably propylene monomers, with an α,ω -diene in the presence of hydrogen and/or a comonomer, such as ethylene or butene, and the olefin/ α,ω -diene copolymers resulting therefrom. Desirably, the present invention involves a co-polymerization reaction of olefin monomers, in which the co-polymerized olefin monomers include propylene, ethylene and α,ω -diene monomers.

The present invention further includes a method of lowering the MFR response of a high MFR polymer producing metallocene catalyst. The method includes contacting the catalyst with a sufficient quantity of α,ω -diene monomer such that when other monomer is also added to the catalyst under suitable polymerization conditions, the resulting polymer has an MFR in the range of 0.1 to 19. Suitable polymerization conditions may include hydrogen or polymerizable reactant content. In some embodiments, the metallocene catalyst is a zirconium metallocene catalyst.

In other embodiment, the present invention includes a method of forming a propylene polymer having a MFR in the range of 0.1 to 19. The method includes contacting a high MFR polymer producing metallocene catalyst under suitable conditions with propylene and α,ω -diene monomers and recovering the propylene polymer. Suitable polymerization conditions may include hydrogen

or other polymerizable reactant content. In some embodiments, the metallocene catalyst is a zirconium metallocene catalyst.

Other invention embodiments include a catalyst composition. The catalyst composition contains a high MFR polymer producing metallocene catalyst and a sufficient quantity of α,ω -diene monomer such that when the catalyst composition is contacted with another monomer under suitable polymerization conditions, the resulting polymer has an MFR in the range of 0.1 to 19. The catalyst composition desirably includes a zirconium metallocene.

BRIEF DESCRIPTION OF THE DRAWINGS

Figure 1 is a plot of Mn, Mw, and Mz vs. diene concentration for Examples 1-6. Figure 2 is a plot of Mn and Mw vs. ethylene concentration for Examples 16-20. Figure 3 is a plot illustrating the effect of diene incorporation on molecular weight for Examples 21-26.

DETAILED DESCRIPTION

As used herein, the term "high melt flow rate polymer producing catalyst" means a catalyst, desirably a metallocene catalyst, capable of producing polypropylene and particularly homo-polypropylene having an MFR greater than 19 under the following polymerization conditions. Charging a 2-liter autoclave reactor with propylene (1 L), triethylaluminum (1.0 mL of 1 M solution in hexane) and hydrogen (0 - 10 mmol). Heating the reactor to 70 ° C and injecting the catalyst into the reactor with 200 mL of propylene. The polymerization reaction is run for one hour while maintaining the reactor temperature at 70 ° C. After one hour, the reactor is cooled to 25 ° C and vented. The polymer product is collected and the MFR measured in accordance with ASTM D-1238 at 230° C and 2.16 kg load.

As used herein the term "MFR response" means the melt flow rate of polypropylene produced by a high melt flow rate polymer producing catalyst under the conditions described in the definition of the term "high melt flow rate polymer producing catalyst".

Ranges are used here and throughout the description of the invention to further define the invention. Unless otherwise stated, it will be understood that these ranges include the recited end point value(s) as well as those values defined by and/or between the recited end point value(s). These ranges also encompass values falling outside the recited range, but functionally equivalent to values within the range.

In the description of the copolymer, and particularly when describing the constituents of the copolymer, in some instances, monomer terminology may be used. For example, terms such as "olefin", "propylene", " α,ω -diene", "ethylene" and other α -olefins, may be used. When such terminology is used to describe the copolymer constituents, it means the polymerized units of such monomers present in the copolymer.

The olefin/ α,ω -diene copolymer, and desirably a propylene/ α,ω -diene copolymer, includes a co-polymerization reaction product, and desirably a metallocene co-polymerization reaction product, of one or more olefin monomers, such as propylene, and one or more species of α,ω -diene monomers. Desirably, the polymer includes a co-polymerization reaction product, and desirably a metallocene co-polymerization reaction product, of one or more α -olefin monomers, and particularly propylene and ethylene monomers, with one or more species of α,ω -diene monomers.

Methods

The methods described herein produce a diene/ α -olefin copolymer. More specifically, these methods produce diene/ α -olefin co-polymerization reaction products having lower MFRs and increased molecular weights in comparison to an α -olefin reaction product polymerized under similar conditions. This is achieved by lowering the MFR response of a high melt flow rate polymer producing catalyst. As such, these methods, and particularly the incorporation of dienes during polymerization, expand the MFR response spectrum, and particularly the MFR response spectrum for polypropylene resins, of such a catalyst. By expanding the MFR response spectrum of these catalysts, the

polymer manufacturer may now employ the same catalyst for meeting both high and low MFR product specifications. In this way, costly catalyst switching is avoided.

5 More particularly, a method of forming a propylene polymer having a MFR in the range of 0.1 to 19 is provided which includes contacting a high MFR polymer producing metallocene catalyst under suitable polymerization conditions with olefin monomer, such as propylene monomers, and α,ω -diene monomers and recovering the propylene polymer. Desirably the metallocene catalyst may be a zirconium metallocene catalyst. Additionally, the contacting
10 step may include hydrogen and ethylene monomers.

Some embodiments of the invention use hydrogen in the amounts shown in Table 1. Hydrogen (in parts per million (ppm)) is measured as the gas phase concentration in equilibrium with liquid monomer at the polymerization temperature. See Table 1.

15

Table 1 – Exemplary Hydrogen content

Embodiment	Hydrogen content, PPM
A	$\leq 20,000$
B	$\leq 50,000$
C	$\leq 10,000$
D	≥ 1000
E	≥ 500
F	≥ 100

Some embodiments of the invention use α,ω -diene in the following concentrations--measured in wt.%, as shown in Table 2.

Table 2 - Exemplary α,ω -diene content

Embodiment	α,ω -diene content	
	Weight Percent	PPM
G	≥ 0.001	≥ 10
H	≤ 1.5	
I	≥ 0.003	
J	≤ 2	$\leq 20,000$
K	≥ 0.005	
L	≤ 1.0	

5

Some embodiments of the invention use ethylene monomers in the concentrations shown in Table 3.

Table 3 - Exemplary ethylene content

Embodiment	Ethylene content, wt%
AQ	≤ 8
BQ	≤ 6
CQ	≤ 7
DQ	≥ 0
EQ	≥ 2
FQ	≥ 1

10

Some embodiments of the invention use polymerizable reactants in the following amounts. See Table 4.

**Table 4 – Exemplary total, polymerizable reactant content,
in weight percent.**

Embodiment	Polymerizable reactant content, weight %
S	≤ 99.999
T	≤ 99.997
U	≥ 95
V	≥ 90
W	≥ 95
X	≤ 99.995

5 Additionally, a method is provided for lowering the MFR response
of a high MFR polymer producing metallocene catalyst that includes contacting
the metallocene catalyst with a sufficient quantity of α,ω -diene monomer such
that when the catalyst is contacted with other monomer under suitable
polymerization conditions, the resulting polymer has an MFR rate in the range of
0.1 to 19. Useful embodiments of these methods employ hydrogen at the
10 concentration shown above in Table 1. See Table 2 for employing useful α,ω -
diene content. See Table 3 for exemplary useful ethylene monomer content.

Some method embodiments use polymerizable reactants shown
above for Table 3.

15 Additionally, a catalyst composition is provided which includes a
high MFR polymer producing metallocene catalyst and a sufficient quantity of
 α,ω -diene monomers such that when the catalyst composition is contacted with
monomer under suitable polymerization conditions, the resulting polymer has an
MFR rate in the range of 0.1 to 19. α,ω -diene monomer may be present for these
embodiments at the concentrations shown in Table 5.

Table 5 – Exemplary α,ω -diene Content II

Embodiment	α,ω -diene content, wt%
QA	≤ 99.5
QB	≤ 99.3
QC	≤ 99.7
QD	≥ 0.1
QE	≥ 0.3
QF	≥ 0.5

These embodiments of metallocene content can have the following values. See Table 6.

5

Table 6 – Exemplary Metallocene Content

Embodiment	Metallocene content, wt%
RA	≤ 99.5
RB	≤ 99.3
RC	≤ 99.7
RQ	≥ 0.1
RE	≥ 0.3
RF	≥ 0.5

Polymerization

The copolymer, which is the co-polymerization reaction product of α,ω -diene and olefin(s) may be prepared by slurry polymerization of the olefins and the diene under conditions in which the catalyst site remains relatively insoluble and/or immobile so that the polymer chains are rapidly immobilized following their formation. Such immobilization is affected, for example, by (1) using a solid, insoluble catalyst, (2) conducting the copolymerization in a medium in which the resulting copolymer is generally insoluble, and (3) maintaining the

10

polymerization reactants and products below the crystalline melting point of the copolymer.

Generally, the metallocene supported catalyst compositions described below, and in greater detail in the Examples, are desirable for co-polymerizing α,ω -dienes and olefins. The polymerization processes suitable for co-polymerizing α,ω -dienes and olefins, and particularly α -olefins, are well known by those skilled in the art and include solution polymerization, slurry polymerization, and low-pressure gas phase polymerization. Metallocene supported catalysts compositions are particularly useful in the known operating modes employing fixed-bed, moving-bed, fluid-bed, or slurry processes conducted in single, series or parallel reactors.

Generally, any of the above polymerization process may be used. When propylene is the selected olefin, a common propylene polymerization process is one that is conducted using a slurry process in which the polymerization medium can be either a liquid monomer, like propylene, or a hydrocarbon solvent or diluent, advantageously aliphatic paraffin such as propane, isobutane, hexane, heptane, cyclohexane, etc., or an aromatic diluent such as toluene. In this instance, the polymerization temperatures may be those considered low, e.g., less than 50 °C, desirably 0 °C - 30 °C, or may be in a higher range, such as up to about 150 °C, desirably from 50 °C up to about 80 °C, or at any ranges between the end points indicated. Pressures can vary from about 100 to about 700 psia (0.69-4.8 MPa). Additional description is given in U.S. Patents 5,274,056 and 4,182,810 and WO 94/21962 which are each fully incorporated by reference.

Pre-polymerization may also be used for further control of polymer particle morphology in typical slurry or gas phase reaction processes in accordance with conventional teachings. For example, this can be accomplished by pre-polymerizing a C_2 - C_6 alpha-olefin, or copolymerizing C_2 - C_6 alpha-olefins and suitable α,ω -dienes, for a limited time. For example, ethylene may be contacted with the supported metallocene catalyst composition at a temperature of

-15 to 30 °C and ethylene pressure of up to about 250 psig (1724 kPa) for 75 min. to obtain a polyethylene coating on the support. The pre-polymerized catalyst is then available for use in the polymerization processes referred to above. In a similar manner, the activated catalyst on a support coated with a previously polymerized polymer can be utilized in these polymerization processes.

Additionally it is desirable to reduce or eliminate polymerization poisons that may be introduced via feedstreams, solvents or diluents, by removing or neutralizing the poisons. For example, monomer feed streams or the reaction diluent may be pre-treated, or treated in situ during the polymerization reaction, with a suitable scavenging agent. Typically such will be an organometallic compound employed in processes such as those using the Group-13 organometallic compounds described in U.S. Patent 5,153,157 and WO-A-91/09882 and WO-A-94/03506, noted above, and that of WO-A-93/14132.

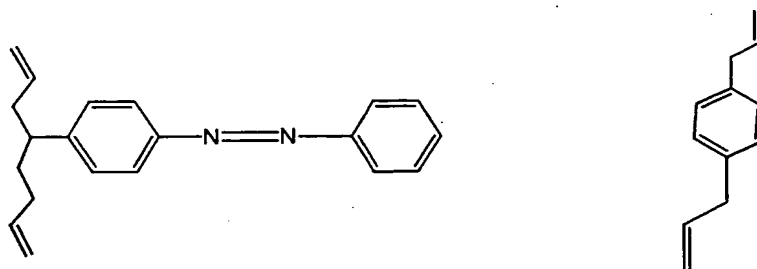
Polymerizable Reactants

Suitable polymerizable reactants include ethylene, C₂-C₁₀ α-olefins or diolefins. Examples of α-olefins include, for example, propylene, butene-1, pentene-1, hexene-1, heptene-1, 4-methyl-1-pentene, 4-methyl-1-hexene, 5-methyl-1-hexene, 1-octene, 1-decene, 1-undecene, 1-dodecene and the like. In addition, mixtures of these and other α-olefins may also be used, such as, for example, propylene and ethylene as well as monomer combinations from which elastomers are formed. Ethylene, propylene, styrene and butene-1 from which crystallizable polyolefins may be formed are particularly desirable.

Dienes

Examples of suitable α,ω-diene species include α,ω-dienes that contain at least 5 carbon atoms and have up to about 30 carbon atoms, more suitably are α,ω-dienes that contain from 6 to 14 carbon atoms. The diene content can be estimated, for example, by measuring absorbance at 722 cm⁻¹ using infrared spectroscopy. Representative examples of such α,ω-dienes include 1,6-heptadiene, 1,7-octadiene, 1,8-nonadiene, 1,9-decadiene, 1,10-undecadiene, 1,11-dodecadiene, 1,12-tridecadiene, 1,13-tetradecadiene, and the like. Additionally,

α,ω -dienes containing aliphatic, cyclic or aromatic substituents may also be used. Of these, 1,7-octadiene, and 1,9-decadiene are more desirable, particularly desirable is 1,9-decadiene. Branched α,ω -dienes are also suitable: 1,4-pentadiene, 1,5-hexadiene, 1,6-heptadiene, 1,7-octadiene, 1,8 nonadiene, 1,9-decadiene, 1,10-undecadiene, 1,11-dodecadiene, 3,4-dimethyl-1,6-heptadiene, 4-ethyl-1,7-octadiene, or 3-ethyl-4-methyl-5-propyl-1,10-undecadiene. α,ω -dienes encompass a broad class of compounds. A key feature for an α,ω -diene of an embodiment of this invention is having proximal and distal, terminal alkene unsaturation. Some esoteric examples include:



Catalyst System

Metallocenes: As used herein "metallocene" and "metallocene component" refer generally to compounds represented by the formula $Cp_mMR_nX_q$, wherein Cp is a cyclopentadienyl ring that may be substituted, or a derivative thereof that may be substituted, M is a Group-4, -5, or -6 transition metal, for example titanium, zirconium, hafnium, vanadium, niobium, tantalum, chromium, molybdenum and tungsten, R is a hydrocarbyl group or hydrocarboxy group having from one to 20 carbon atoms, X is a halogen, and $m=1-3$, $n=0-3$, $q=0-3$, and the sum of $m+n+q$ is equal to the oxidation state of the transition metal.

Methods for making and using metallocenes are well known in the art. For example, metallocenes are detailed in United States Patent Nos. 4,530,914; 4,542,199; 4,769,910; 4,808,561; 4,871,705; 4,933,403; 4,937,299; 5,017,714; 5,026,798; 5,057,475; 5,120,867; 5,278,119; 5,304,614; 5,324,800; 5,350,723; and 5,391,790 each fully incorporated herein by reference.

Methods for preparing metallocenes are fully described in the Journal of Organometallic Chem., volume 288, (1985), pages 63-67, and in EP-A-320762, both of which are herein fully incorporated by reference.

Metallocene catalyst components are described in detail in U.S. Patent Nos. 5,145,819; 5,243,001; 5,239,022; 5,329,033; 5,296,434; 5,276,208; 5,672,668; 5,304,614; 5,374,752; 5,240,217; 5,510,502 and 5,643,847; and EP 549 900 and 576 970 all of which are herein fully incorporated by reference.

Illustrative but non-limiting examples of desirable metallocenes include:

- 10 Dimethylsilanylbis(2-methyl-4-phenyl-1-indenyl)ZrCl₂;
Dimethylsilanylbis(2-methyl-4,6-diisopropylindenyl)ZrCl₂;
Dimethylsilanylbis(2-ethyl-4-phenyl-1-indenyl)ZrCl₂;
Dimethylsilanylbis(2-ethyl-4-naphthyl-1-indenyl)ZrCl₂,
Phenyl(Methyl)silanylbis(2-methyl-4-phenyl-1-indenyl)ZrCl₂
15 Dimethylsilanylbis(2-methyl-4-(1-naphthyl)-1-indenyl)ZrCl₂,
Dimethylsilanylbis(2-methyl-4-(2-naphthyl)-1-indenyl)ZrCl₂,
Dimethylsilanylbis(2-methyl-indenyl)ZrCl₂,
Dimethylsilanylbis(2-methyl-4,5-diisopropyl-1-indenyl)ZrCl₂,
Dimethylsilanylbis(2,4,6-trimethyl-1-indenyl)ZrCl₂,
20 Phenyl(Methyl)silanylbis(2-methyl-4,6-diisopropyl-1-indenyl)ZrCl₂,
1,2-Ethandiylbis(2-methyl-4,6-diisopropyl-1-indenyl)ZrCl₂,
1,2-Butandiylbis(2-methyl-4,6-diisopropyl-1-indenyl)ZrCl₂,
Dimethylsilanylbis(2-methyl-4-ethyl-1-indenyl)ZrCl₂,
Dimethylsilanylbis(2-methyl-4-isopropyl-1-indenyl)ZrCl₂,
25 Dimethylsilanylbis(2-methyl-4-t-butyl-1-indenyl)ZrCl₂,
Phenyl(Methyl)silanylbis(2-methyl-4-isopropyl-1-indenyl)ZrCl₂,
Dimethylsilanylbis(2-ethyl-4-methyl-1-indenyl)ZrCl₂,
Dimethylsilanylbis(2,4-dimethyl-1-indenyl)ZrCl₂,

Dimethylsilanylbis(2-methyl-4-ethyl-1-indenyl)ZrCl₂,

Dimethylsilanylbis(2-methyl-1-indenyl)ZrCl₂.

Generally, the racemic isomer of these metallocenes are used to produce stereospecific polymers, such as isotactic polypropylene. But mixtures of meso and racemic metallocenes may be used to produce polypropylene blends which include amorphous and crystalline components that are useful as thermoplastic elastomers and adhesive compositions. In these instances, the amorphous component of the blend may include lower molecular weight species as compared to the species present in the crystalline component. In some elastomer and/or adhesive application, these lower molecular weight species may not be desirable. But when such mixtures of meso and racemic metallocenes are used to copolymerize propylene in the presence of one or more of the above described α,ω -dienes, the molecular weight of the amorphous component would be expected to increase, thus reducing the presence in the amorphous component of the undesirable lower molecular weight species. In these instances, propylene may also be polymerized with ethylene and other α -olefins, such as those described above.

Activators: Metallocenes are generally used in combination with some form of activator. Alkylaluminumoxanes may be used as activators, most desirably methylaluminumoxane (MAO). There are a variety of methods for preparing aluminumoxane, non-limiting examples of which are described in U.S. Patent No. 4,665,208, 4,952,540, 5,091,352, 5,206,199, 5,204,419, 4,874,734, 4,924,018, 4,908,463, 4,968,827, 5,308,815, 5,329,032, 5,248,801, 5,235,081, 5,103,031 and EP-A-0 561 476, EP-B1-0 279 586, EP-A-0 594-218 and WO94/10180, each fully incorporated herein by reference. Activators may also include those comprising or capable of forming non-coordinating anions along with catalytically active metallocene cations. Compounds or complexes of fluoro aryl-substituted boron and aluminum are particularly suitable, see, e.g., US patents 5,198,401; 5,278,119; and 5,643,847.

Support Materials: The catalyst compositions used in the process of this invention may optionally be supported using a porous particulate material, such as for example, clay, talc, inorganic oxides, inorganic chlorides and resinous materials such as polyolefin or polymeric compounds.

5 Desirably, the support materials are porous inorganic oxide materials, which include those from the Periodic Table of Elements of Groups 2, 3, 4, 5, 13 or 14 metal oxides. Silica, alumina, silica-alumina, and mixtures thereof are particularly desirable. Other inorganic oxides that may be employed either alone or in combination with the silica, alumina or silica-alumina are
10 magnesia, titania, zirconia, and the like.

A particularly desirable support material is particulate silicon dioxide. Particulate silicon dioxide materials are well known and are commercially available from a number of commercial suppliers. Desirably the silicon dioxide used herein is porous and has a surface area in the range of from
15 about 10 to about 700 m²/g, a total pore volume in the range of from about 0.1 to about 4.0 cc/g and an average particle diameter in the range of from about 10 to about 500 μm. More desirably, the surface area is in the range of from about 50 to about 500 m²/g, the pore volume is in the range of from about 0.5 to about 3.5 cc/g and the average particle diameter is in the range of from about 15 to about
20 150 μm. Most desirably the surface area is in the range of from about 100 to about 400 m²/g, the pore volume is in the range of from about 0.8 to about 3.0 cc/g and the average particle diameter is in the range of from about 20 to about 100 μm. The average pore diameter of typical porous silicon dioxide support materials is in the range of from about 10 to about 1000Å. Desirably, the support
25 material has an average pore diameter of from about 50 to about 500Å, and most desirably from about 75 to about 350Å. Desirably, supports suitable for use in this invention include talc, clay, silica, alumina, magnesia, zirconia, iron oxides, boria, calcium oxide, zinc oxide, barium oxide, thoria, aluminum phosphate gel, polyvinylchloride and substituted polystyrene and mixtures thereof.

The supported catalyst composition may be used directly in polymerization or the catalyst composition may be prepolymerized using methods well known in the art. For details regarding prepolymerization, see U. S. Patent Nos. 4,923,833; 4,921,825; and 5,643,847; and EP 279 863 and EP 354 893 (each fully incorporated herein by reference).

Modifiers

Modifiers may be those commonly employed with plastics. Examples include one or more of the following: heat stabilizers or antioxidants, neutralizers, slip agents, antiblock agents, pigments, antifogging agents, antistatic agents, clarifiers, nucleating agents, ultraviolet absorbers or light stabilizers, fillers, hydrocarbon resins, rosins or rosin esters, waxes, additional plasticizers and other additives in conventional amounts. Effective levels are known in the art and depend on the details of the base polymers, the fabrication mode and the end application. In addition, hydrogenated and/or petroleum hydrocarbon resins and other plasticizers may be used as modifiers.

Propylene/ α,ω -diene Copolymer

Generally, the polymerized olefin units are present in the copolymer in the range from 90 weight percent (wt%) to 99.99 wt% of the copolymer. The polymerized α,ω -diene units are present in the copolymer in the range from 0.001 wt% to 2 wt% of the copolymer. Desirably the α,ω -diene(s) are present in the range from 0.005 wt% to 1.5 wt% and more desirably in the range from 0.005 wt% to 1.0 wt% of the copolymer.

When two or more olefins are present, desirably one of the olefins is propylene, which may be present in copolymer in the range from 90.05 wt% to 99.99 wt% of the copolymer. The other olefin(s), one of which is desirably ethylene, may be present in the copolymer in the range from 0.05 wt% to 8 wt%, and desirably in the range from 0.1 wt% to 6 wt% and more desirably in the range from 0.5 wt% to 3 wt% of the copolymer. The α,ω -diene(s) are present in the copolymer in the range from 0.001 wt% to 2 wt% of the copolymer. Desirably

the α,ω -diene(s) are present in the range from 0.005 wt% to 1.5 wt% and more desirably in the range from 0.005 wt% to 1.0 wt% of the copolymer.

Still more desirably, the copolymer includes: propylene in the range from 90 wt% to 99.99 wt% of the copolymer; C_2 or other α -olefin(s) in the range from 0.00 wt% to 8 wt%, desirably in the range from 0.05 to 6 wt% and more desirably in the range from 0.5 wt% to 3 wt% of the copolymer; the α,ω -diene(s) are present in the copolymer in the range from 0.001 wt% to 2 wt%, desirably in the range from 0.005 wt% to 1.5 wt% and more desirably in the range from 0.005 wt% to 1.0 wt% of the copolymer.

The copolymer has a weight average molecular weight in the range from 30,000 to 2,000,000, desirably from 70,000 to 1,000,000 and even more desirably from 100,000 to 750,000. The copolymer has a molecular weight distribution (MWD) in the range from 1.7 to 6.0, desirably from 2.0 to 5.0 and even more desirably from 2.0 to 4.0.

The copolymer may have a melt flow rate (MFR) in the range of from 0.1 dg/min to 19 dg/min, desirably from 0.5 dg/min to 15 dg/min, even more desirably from 1.0 dg/min to 10 dg/min and, even more desirably from 1.0 dg/min to 8 dg/min and, and even more desirably from 1.0 dg/min to 5 dg/min. MFR is determined according to ASTM D-1238, condition L (2.16 kg, 230 ° C). The melting point of the copolymer may be less than 165 °C, and desirably less than 160 °C. Upper limits for melting point depend on the specific application but would typically not be higher than 165 °C. The hexane extractable level (as measured by 21 CFR 177.1520(d)(3)(i)) of the copolymer may be less than 2.0 wt%, and desirably less than 1.0 wt%.

The copolymer may include blends, including reactor blends of α -olefins and particularly homopolymers and blends, including reactor blends of polypropylene and particularly metallocene catalyzed polypropylene.

The copolymer may further be described as "branched". As used herein, the term "branched" means one or more α,ω -diene linkages, desirably at

the α,ω positions of the α,ω -diene, between one or more polymer chains formed by the polymerization of one or more α -olefins.

The copolymer may be blended with other polymers, particularly with other polyolefins. Specific examples of such polyolefins include, but are not limited to ethylene-propylene rubber, ethylene-propylene diene rubber, dynamically vulcanized alloys, adhesive compositions and ethylene plastomers. Specific examples of commercially available ethylene plastomers include EXACT™ resins products of Exxon Chemical Company and, AFFINITY™ resins and ENGAGE™ resins, products of Dow Chemical Company.

These copolymer may be employed in a wide variety of applications, the articles of which include, for example, films, fibers, such as spunbonded and meltblown fibers, fabrics, such as nonwoven fabrics, molded articles, and as blend components (also known as modifiers). More particularly, these articles include, for example, cast films, oriented films, injection molded articles, blow molded articles, foamed articles and thermoformed articles.

The propylene/ α,ω -diene copolymers recovered by the methods of this invention are generally suitable in the applications such as thermoforming, blow molding, foaming, fibers, fabrics and blown film. Specific examples of these applications include thermoformed articles, dairy containers, biaxial oriented films and insulation materials. Examples of other methods and applications for making polypropylene and for which polypropylene may be useful are described in the Encyclopedia of Chemical Technology, by Kirk-Othmer, Fourth Edition, vol. 17, at pages 748-819, which are incorporated by reference herein. Examples of other applications for which foamed plastic, such as foamed polypropylene, are useful may be found in Encyclopedia of Chemical Technology, by Kirk-Othmer, Fourth Edition, vol. 11, at pages 730-783, which are incorporated by reference herein.

In the case of propylene random copolymers (RCP), such as propylene/ethylene, diene incorporation during polymerization may produce RCP resins suitable in applications such as films and injection molded medical devices.

Specific examples of these applications include syringes, pill-bottles, cast film, such as cast film for packaging, containers and films for low temperature uses.

Examples

General

5 Polymerization grade propylene monomers were purified by passing first through basic alumina activated at 600 °C, followed by molecular sieves activated at 600 °C. 1,9-decadiene (96%), and 1,5-hexadiene were purchased from Aldrich Chemical Co. and used as received.

10 Melt flow rate (MFR) of the polymers was measured using ASTM D-1238 at 230 °C and 2.16 kg load. Molecular weight of the polymers was analyzed by GPC using Waters 150C high temperature system with a DRI detector and Showdex AT-806MS column. Melting and crystallization temperatures of the polymers were measured on a TA Instrument DSC-912 using a heating and cooling rate of 10 °C/min with a starting temperature of 0 °C and a
15 stopping temperature of 250 °C. The melting temperatures reported were obtained from the second melt.

Molecular weight of the polymers was analyzed by GPC using Waters 150° C high temperature system with a DRI detector and Showdex AT-806MS column. Melting and crystallization temperatures of the polymers were
20 measured on a TA Instrument DSC-912 using a heating and cooling rate of 10 °C/min. The melting temperatures reported were obtained from the second melt. The mechanical properties were measured using ASTM-1708 microtensile testing procedure. Recoverable compliance was measured in a Rheometrics Dynamic Stress Rheometer (DSR).

25

Catalyst A Preparation

All catalyst preparations were performed in an inert atmosphere with <1.5 ppm H₂O content. The metallocenes were obtained from internal sources. The silica support, "MS 948", was purchased from Grace Davison Inc.,

and calcined at 600 °C under a dry nitrogen flow for 8-24 hours to achieve a hydroxyl content of 0.8 to 1.2 mmol/g silica.

In a nitrogen purged dry glove box, the metallocene, dimethylsilylbis(2-methyl indenyl)zirconium dichloride (0.105 g, 0.220 mmole) was weighed into a 100 mL beaker. Methylalumoxane (MAO, 9.30 g, 30% in toluene) was added to the beaker. The mixture was stirred for 1 hour to dissolve and activate the metallocene. After 1 hour, the activated metallocene solution was diluted with 20 g of toluene and added slowly to the pre-calcined silica (MS948, 10.00 g) with manual mix until a uniform colored slurry was obtained. The slurry was transferred to a 250 mL flask connected to a rotovap. Solvent was removed by gradually reducing of pressure and the catalyst was dried under vacuum. Loading: 0.022 mmol of transition metal and 4.8 mmol of Al per gram of silica. Catalyst A was stored in mineral oil (approximately 20 wt% in oil).

Examples 1- 6

The copolymerization of propylene monomers in the presence of Catalyst A in Examples 1- 6 illustrate that low concentration of 1, 9-decadiene (1,9-DD) lowers the MFR of the polyolefins as compared to polymerization of propylene monomers in the absence of 1,9-decadiene (polypropylene control).

Table I summarizes some characterization data of diene modified polypropylene. The polypropylene samples with MFR of 2 were made at diene concentration below 0.02 mol% (400 ppm, v/v). The MFR of the polypropylene control sample was 20. As such, a ten-fold reduction in MFR was achieved. At these diene concentrations, gelation (crosslinking) was essentially not detectable by an extraction test.

Table I

Example	1	2	3	4	5	6
Temp (°C)	70	70	70	70	70	70
Propylene (mL)	1200	1200	1200	1200	1200	1200
H ₂ (mmol)	0	0	0	0	0	0
Catalyst A (mg)	100	100	100	100	100	100
1,9-decadiene(ppm)	0	50	104	208	416	832
MFR g/10 min)	19.6	16	18	9.8	1.7	3.5
GPC						
Mn	95,284	88,849	93,653	97,808	105,619	103,260
Mw	179,536	185,955	195,283	252,711	288,483	297,803
MWD	1.88	2.09	2.09	2.58	2.73	2.88
Mz	282,676	332,049	359,632	602,404	763,053	814,912
Mz/Mw	1.57	1.79	1.84	2.38	2.65	2.74
Mz+1	424,240	570,994	611,686	1,231,715	1,463,951	1,552,720
Mz+1/Mw	2.36	3.07	3.13	4.87	5.07	5.21
DSC						
Melt (°C)	147.7	148.3	145.6	147.7	147.6	148.7
Recrystal. (°C)	109.5	108	108.9	111.1	111.6	112.3

Polymerization

Polymerization grade propylene was supplied directly in a nitrogen-jacketed line and purified by passing through activated basic alumina and molecular sieves. Polymerization was conducted in a 2-liter autoclave reactor. The reactor was charged with triethylaluminum (1.0 mL of 1M solution in hexane), and 1,9-decadiene. Propylene (1 L) was added and reactor contents were stirred at 550 RPM. Catalyst A (550 mg, 18.1 wt% in mineral oil, pre-loaded in a catalyst tube) was injected with propylene (200 mL). The reactor was heated to 70 °C, and stirring was kept at 550 RPM. After 60 min, the reactor was cooled to 25 °C and vented. The polymer was collected and dried in air for 12 hours. Figure 1 illustrates the Mn, Mw, and Mz versus diene concentration. Upon addition of diene, Mw and Mz increase significantly while Mn remains relatively constant. The resulting polymers have a broadened MWD relative to the control.

Examples 7-9

In Examples 7-9, 1,5 hexadiene was copolymerized with propylene using Catalyst A in a polymerization process similar to the process described in Examples 1-6. Table II shows incorporation of 1,5-hexadiene as evidenced by the reduction in the MFR of the resulting polypropylenes with increasing of diene concentration.

Polymerization - Polymerization grade propylene was supplied directly in a nitrogen-jacketed line and purified by passing through activated basic alumina and molecular sieves. Polymerization was conducted in a 2-liter autoclave reactor. The reactor was charged with triethylaluminum (1.0 mL of 1M solution in hexane), and 1,5-hexadiene. Propylene (1 L) was added and reactor contents were stirred at 750 RPM. Then Catalyst A (750 mg, 18.1 wt% in mineral oil, pre-loaded in a catalyst tube) was injected with propylene (200 mL). The reactor was heated to 70 °C, and stirring was kept at 750 RPM. After 60 min, the reactor was cooled to 25 °C and vented. The polymer was collected. Table II reports the process conditions and other data for Examples 6-9.

Table II

Example	7	8	9
Temp(°C)	70	70	70
Propylene (mL)	1200	1200	1200
H ₂ (mmol)	0	0	0
Catalyst A (mg)	135	135	135
1,5-hexadiene (ppm)	0	667	833
MFR (g/10 min)	30.5	4.5	Gelled
DSC	*	*	*
Melt (°C)	*	150.7	*
Recrystal. (°C)	*	112.7	*

* -- Not Measured

Examples 10-15

Examples 10-15 illustrate copolymerization of propylene monomers with low levels of 1,9-decadiene in the presence of hydrogen. The data in Table III illustrate an increase in catalyst activity/productivity and a decrease in MFR (increase in molecular weight) of the propylene-diene copolymers produced in the presence of hydrogen and 1,9-decadiene compared to propylene polymers produced in the absence of hydrogen and 1,9-decadiene.

Polymerization

Polymerization grade propylene was supplied directly into a nitrogen-jacketed line and purified by passing through activated basic alumina and molecular sieves. Polymerization was conducted in a 2-liter autoclave reactor that was charged with triethylaluminum (1.0 mL of 1M solution in hexane), hydrogen and 1,9-decadiene. Propylene (1.0 L) was added, and while the contents of the reactor were stirred at 550 rpm, 200 mg of Catalyst A (20 wt% in mineral oil, pre-loaded in a catalyst tube) was injected with propylene (200 mL). The reactor was heated to 70 °C. The polymerization was terminated by cooling the reactor to 25 °C and venting the propylene. The polymer was collected and dried in air for 12 hours.

Table III

Example	10	11	12	13	14	15
Temp(°C)	70	70	70	70	70	70
Propylene (mL)	1200	1200	1200	1200	1200	1200
H ₂ (mmol)	0	6.6	6.6	0	6.6	6.6
Catalyst A (mg)	200	202	192	200	200	200
1,9-decadiene (ppm)	0	0	300	0	0	300
Polymn. Time (min)	30	35	30	15	15	15
Polymer yield (g)	112.5	211.5	154.4	15	64	60
Cat. Activity (g/g-h)	1120	1795	1608	300	1280	1200
MFR (g/10min)	35	75	8.5	35	78	19

Propylene random copolymers (RCP) are typically made through random incorporation of a comonomer (ethylene or butene, up to 6 wt%) into polypropylene chain. However, unlike conventional Ziegler-Natta (ZN) catalysts, when metallocene catalysts are used to make RCPs, the molecular weight of the polymer decreases significantly upon addition of ethylene comonomer. The reduction of molecular weight may limit the use of some metallocene catalysts in making RCPs. This is so because lowering of molecular weight due to ethylene incorporation would make the resulting RCP unsuitable for many applications.

Examples 16-20

Examples 16-20 illustrate the copolymerization of propylene monomers and ethylene monomers to form a RCP. As expected, the melting point and molecular weight of the RCP decreases with increased ethylene content. Note that a significant decrease of ~ 40% of molecular weight occurs upon incorporation of 2wt% of ethylene (See Table IV and Figure 2). Decreasing the molecular weight (increasing the MFR) is generally not desirable for applications requiring low MFR materials.

Polymerization

Polymerization grade propylene and ethylene were supplied directly in a nitrogen-jacketed line and purified by passing through activated basic alumina and molecular sieves. Polymerization was conducted in a 2-liter autoclave reactor. The reactor was charged with triethylaluminum (1.0 mL of 1M solution in hexane). Propylene (800 cc) was added. The reactor was heated to 60 °C and equilibrated with stirring at 550 RPM. Ethylene was introduced into reactor to give a desired pressure increase (ΔP). Catalyst A (100 mg, 20 wt% in mineral oil, pre-loaded in a catalyst tube) was injected with propylene (200 mL). The polymerization was kept for 60 min, and the reactor was cooled to 25 °C and vented. The polymer was collected and dried in air for 12 hours.

Table IV

Example	16	17	18	19	20
Temp (°C)	60	60	60	60	60
Propylene (mL)	1000	1000	1000	1000	1000
Ethylene (ΔP , psi)	0	3	3	5	7
H ₂ (mmol)	0	0	0	0	0
Catalyst A (mg)	100	100	100	100	100
FT-IR					
Ethylene content (wt%)	0.0	0.9	1.9	2	4.1
GPC					
Mn	103,112	78,691	64,341	62,811	54,033
Mw	177,210	132,873	108,617	108,454	92,427
MWD	1.72	1.69	1.69	1.73	1.71
Mz	264,463	198,755	156,261	157,203	133,073
Mz/Mw	1.49	1.50	1.44	1.45	1.44
DSC					
Melt (°C)	148.4	140.4	131.8	131.6	120.3
Recrystal (°C)	110.8	101.3	93.7	95.6	84.1

Examples 21-26

Examples 21-26 illustrate the copolymerization of propylene monomers with ethylene monomers in the presence of small amounts of 1, 9-decadiene (1,9-DD). The results are reported in Table V. The incorporation 100
5 - 400 ppm of diene effectively increased the molecular weight, especially Mw and Mz, of the RCP. The RCP sample made at diene concentration of 200 ppm had Mw similar to the homo polypropylene polymer of Example 21. Increasing the diene level led to a further increase of molecular weight. Therefore, the loss of molecular weight in RCP due to the introduction of ethylene can be recovered by
10 the incorporation of diene. It was further noted that at these diene concentrations, gelation (crosslinking) was essentially not detectable in an extraction test.

Polymerization

Polymerization grade propylene and ethylene were supplied directly in a nitrogen-jacketed line and purified by passing through activated basic
15 alumina and molecular sieves. Polymerization was conducted in a 2-liter autoclave reactor. The reactor was charged with triethylaluminum (1.0 mL of 1M solution in hexane), and 1,9-decadiene. Propylene (800 cc) was added. The reactor was heated to 60 °C and equilibrated with stirring at 550 RPM. Ethylene was introduced into reactor to give a desired \square P. Catalyst A (500 mg, 20 wt% in
20 mineral oil, pre-loaded in a catalyst tube) was injected with propylene (200 mL). The polymerization was kept for 60 min, and the reactor was cooled to 25 °C and vented. The polymer was collected and dried in air for 12 hours.

Characterization results are summarized and compared in Table V. The Mn, Mw, and Mz are plotted in Figure 3. Note that upon incorporation of
25 200-300 ppm of diene, MFR returns to substantially the same level of homo-polypropylene. The decrease of molecular weight due to ethylene is substantially recovered.

Table V

Example	21	22	23	24	25	26
Temp(C)	60	60	60	60	60	60
Propylene (mL)	1000	1000	1000	1000	1000	1000
Ethylene (ΔP, psi)	0	5	5	5	5	5
H ₂ (mmol)	0	0	0	0	0	0
Catalyst A (mg)	100	100	100	100	100	100
1,9-decadiene (ppm)	0	0	100	200	300	400
FT-IR						
Ethylene content (wt%)	0	1.4	2	1.6	1.3	1.3
MFR (g/10 min)	14.7	70.9	80.0	46.4	16.6	2.8
GPC						
Mn	103,112	67,316	67,195	71,558	81,433	83,612
Mw	177,210	117,363	119,038	147,501	197,914	242,161
MWD	1.72	1.74	1.77	2.06	2.43	2.90
Mz	264,463	169,736	181,501	283,338	458,998	649,635
Mz/Mw	1.49	1.45	1.52	1.92	2.32	2.68
DSC						
Melt (°C)	148.4	135.6	132.8	135.1	137.3	139.9
Recrystal. (°C)	110.8	96.2	94.3	96.1	98.3	100.7

Referring now to Figure 3, it is apparent that upon addition of diene, Mw and Mz increase significantly while Mn remains relatively constant indicating that the copolymerized RCP polymers have a broadened molecular weight distribution (MWD). Such polymers are expected to show not only enhanced physical and melt properties but also improved processability.

While the present invention has been described and illustrated by reference to particular embodiments, it will be appreciated by those of ordinary skill in the art that the invention lends itself to many different variations not illustrated herein. For these reasons, then, reference should be made solely to the appended claims for purposes of determining the true scope of the present invention.

Although the appendant claims have single dependencies in accordance with U.S. patent practice, each of the features in any of the appendant claims can be combined with each of the features of other appendant claims or the main claim.

We claim:

Claims

1. A method of lowering MFR response of a metallocene catalyst comprising:
5 contacting the catalyst with a sufficient quantity of α,ω -diene monomer such that when the catalyst composition is contacted with polymerizable reactants under suitable polymerization conditions, the resulting polymer has an MFR rate in the range of 0.1 to 19.
- 10 2. The method of claim 1 wherein the α,ω -diene is present in the range of 10 to 20,000 ppm of the polymerizable reactants.
3. The method of claim 1 wherein the metallocene catalyst is further defined as a zirconium metallocene catalyst.
- 15 4. The method of claim 1 wherein the polymerizable reactants are propylene monomers.
5. The method of claim 1 wherein the polymerization conditions are further
20 defined as slurry polymerization conditions.
6. The method of claim 1 wherein the polymerization conditions further includes the presence of hydrogen.
- 25 7. A method of lowering MFR response of a metallocene catalyst in the presence of hydrogen in the range of 100 to 50,000 ppm comprising:
 contacting the catalyst with a sufficient quantity of α,ω -diene monomer such that when the catalyst composition is contacted with
 propylene monomers under suitable polymerization conditions, the
30 resulting polymer has an MFR rate in the range of 0.1 to 19.

8. The method of claim 7 wherein the catalyst is further defined as a zirconium metallocene catalyst.
- 5 9. The method of claim 7 wherein the α,ω -diene is present in the range of 10 to 20,000 ppm of the propylene monomers.
10. The method of claim 7 wherein the α,ω -diene monomer is 1,9-decadiene.
- 10 11. A method of lowering MFR response of a zirconium metallocene catalyst in the presence of ethylene monomers comprising:
contacting the zirconium metallocene catalyst with a sufficient quantity of α,ω -diene monomer such that when the catalyst composition is contacted with propylene monomers under suitable polymerization conditions the resulting polymer has an MFR rate in
15 the range of 0.1 to 19.
12. The method of claim 11 wherein the α,ω -diene is present in the range of 10 to 20,000 ppm.
- 20 13. The method of claim 11 wherein the α,ω -diene monomer is 1,9-decadiene.
14. A method of forming a propylene polymer having a MFR in the range of 0.1 to 19 comprising:
25 contacting a high melt flow rate polymer producing metallocene catalyst under suitable polymerization conditions with propylene and α,ω -diene monomers; and recovering the propylene polymer.

15. The method of claim 14 wherein the metallocene catalyst is further defined as a zirconium metallocene catalyst.
16. The method of claim 14 wherein the contacting step includes hydrogen.
- 5 17. The method of claim 14 wherein the contacting step includes ethylene monomers.
18. A catalyst composition comprising:
10 a high melt flow rate polymer producing metallocene catalyst and a sufficient quantity of α,ω -diene monomers such that when the catalyst composition is contacted with a monomer under suitable polymerization conditions, the resulting polymer has an MFR rate in the range of 0.1 to 19.
- 15 19. The catalyst composition of claim 18 wherein the metallocene catalyst is further defined as a zirconium metallocene catalyst.
20. The catalyst composition of claim 18 wherein the α,ω -diene is present in
20 the range of 10 to 20,000 ppm.
21. The catalyst composition of claim 18 further including a mixture of meso and racemic metallocene catalysts.
- 25 22. A catalyst composition comprising:
a mixture of meso and racemic metallocene catalysts and a quantity of α,ω -diene monomers.

Figure 1. Molecular Weight vs. Diene Concentration

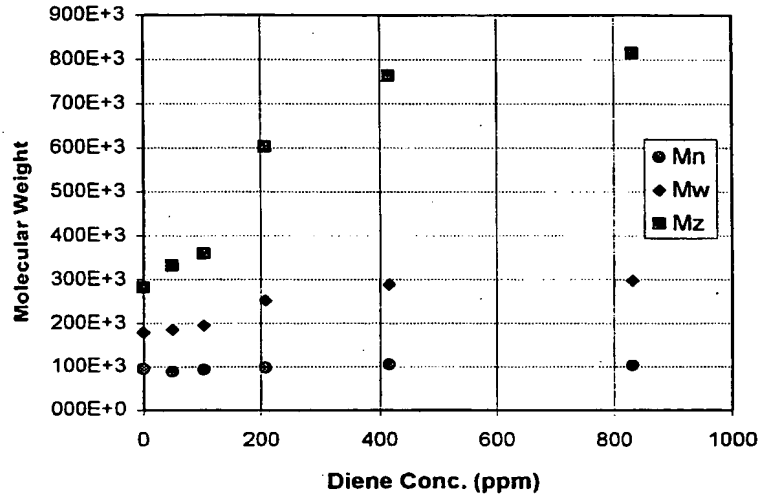


Figure 2. Molecular weight vs. Ethylene Content for Propylene/ethylene Random Copolymers.

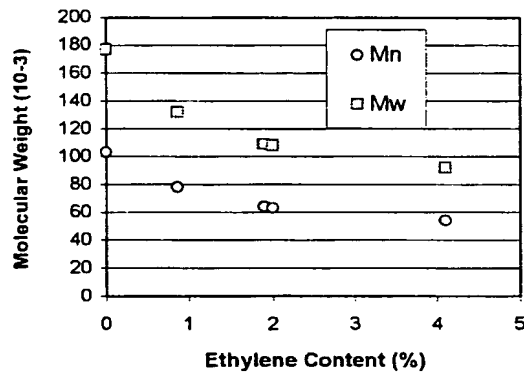
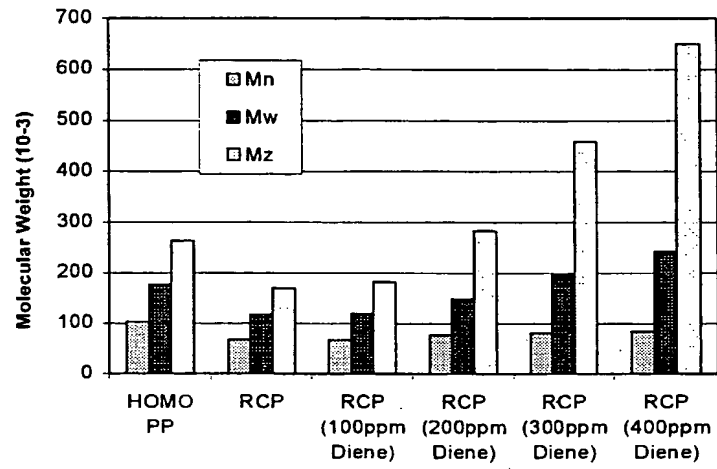


Figure 3. Effect of Diene Incorporation on Molecular Weight



INTERNATIONAL SEARCH REPORT

Int. :ional Application No
PCT/US 00/33325

A. CLASSIFICATION OF SUBJECT MATTER IPC 7 C08F210/06		
According to International Patent Classification (IPC) or to both national classification and IPC		
B. FIELDS SEARCHED		
Minimum documentation searched (classification system followed by classification symbols) IPC 7 C08F		
Documentation searched other than minimum documentation to the extent that such documents are included in the fields searched		
Electronic data base consulted during the international search (name of data base and, where practical, search terms used) EPO-Internal, WPI Data, PAJ		
C. DOCUMENTS CONSIDERED TO BE RELEVANT		
Category *	Citation of document, with indication, where appropriate, of the relevant passages	Relevant to claim No.
X	US 5 670 595 A (MEKA PRASADARO ET AL) 23 September 1997 (1997-09-23)	1-16, 18-22
Y	column 6, line 7 -column 9, line 57; claims 1-11,23-25; examples 2-6,8-15,18-23	17
X	EP 0 942 017 A (EXXON CHEMICAL PATENTS INC) 15 September 1999 (1999-09-15)	1-6, 18-23
Y	paragraphs '0010!', '0017!', '0020!', '0037!'; claims 6-8; examples 2-5,8-15,18-23	17
Y	WO 97 36741 A (GRACE W R & CO) 9 October 1997 (1997-10-09) page 20, line 9 -page 20, line 19	17
<input type="checkbox"/> Further documents are listed in the continuation of box C.		
<input checked="" type="checkbox"/> Patent family members are listed in annex.		
* Special categories of cited documents :		
A document defining the general state of the art which is not considered to be of particular relevance *E* earlier document but published on or after the international filing date *L* document which may throw doubts on priority claim(s) or which is cited to establish the publication date of another citation or other special reason (as specified) *O* document referring to an oral disclosure, use, exhibition or other means *P* document published prior to the international filing date but later than the priority date claimed *T* later document published after the international filing date or priority date and not in conflict with the application but cited to understand the principle or theory underlying the invention *X* document of particular relevance: the claimed invention cannot be considered novel or cannot be considered to involve an inventive step when the document is taken alone *Y* document of particular relevance: the claimed invention cannot be considered to involve an inventive step when the document is combined with one or more other such documents, such combination being obvious to a person skilled in the art. *S* document member of the same patent family		
Date of the actual completion of the international search <p style="text-align: center;">15 March 2001</p>		Date of mailing of the international search report <p style="text-align: center;">22/03/2001</p>
Name and mailing address of the ISA European Patent Office, P.B. 5818 Patentlaan 2 NL - 2280 HV Rijswijk Tel. (+31-70) 340-2040, Tx. 31 651 epo nl, Fax: (+31-70) 340-3016		Authorized officer <p style="text-align: center;">Van Golde, L</p>

INTERNATIONAL SEARCH REPORT

Information on patent family members

International Application No PCT/US 00/33325
--

Patent document cited in search report	A	Publication date	Patent family member(s)	Publication date
US 5670595	A	23-09-1997	CA 2226947	06-03-1997
			EP 0847408	17-06-1998
			EP 0942017	15-09-1999
			JP 11511499	05-10-1999
			PL 325286	20-07-1998
			WO 9708216	06-03-1997
EP 0942017	A	15-09-1999	US 5670595	23-09-1997
			CA 2226947	06-03-1997
			EP 0847408	17-06-1998
			JP 11511499	05-10-1999
			PL 325286	20-07-1998
			WO 9708216	06-03-1997
WO 9736741	A	09-10-1997	AU 722248	27-07-2000
			AU 4362197	22-10-1997
			BR 9708408	03-08-1999
			CA 2250254	09-10-1997
			EP 0889780	13-01-1999
			US 5993922	30-11-1999